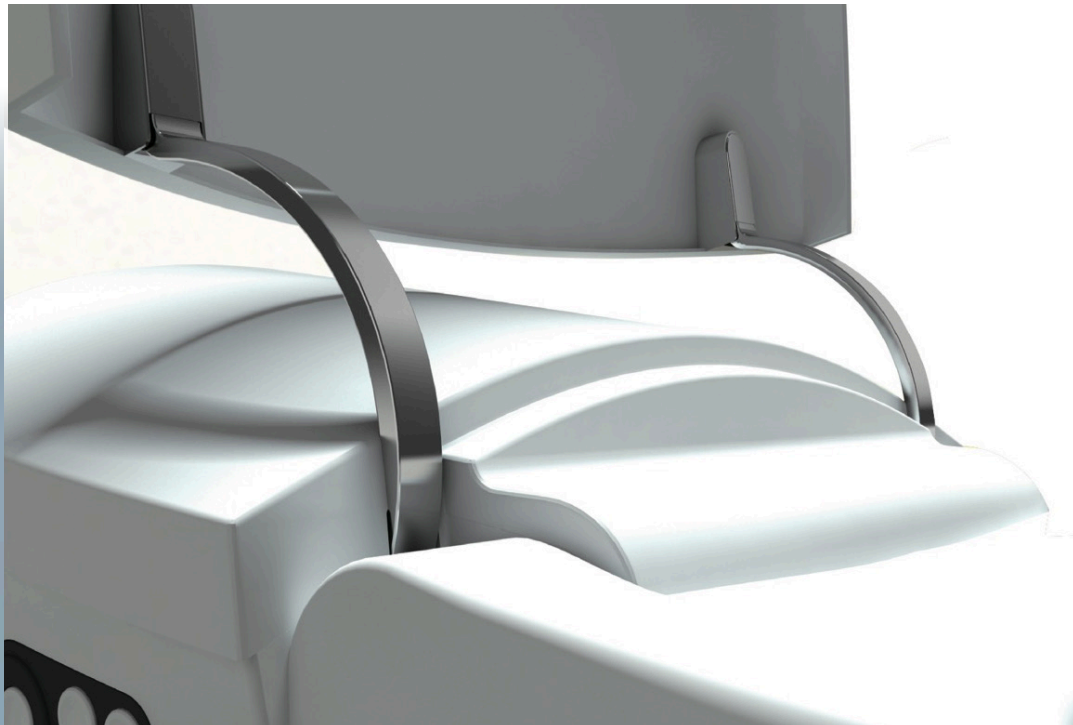


Urban Architect,  
Fashion and Elegance

*Smart* Toilet





## Features

- Super swirling jet Siphon flushing  
Uniform wash the inner wall, strong power. Automatic flushing.
- Ceramic base, pure pottery clay, firing in high temperature of 2336°F, one-piece molding, not easy to crack, not easy to absorb color, water absorption, strong and durable.
- Warm air drying  
Intelligent wind temperature regulation, four-gear temperature adjustable, more intelligent and more humane. Four air temperature adjustable
- Foot touch  
Designed for men only with a touch of toes, flushing function can be achieved.
- Blackout and flushing  
In case of power failure, press the power button on the side of the fuselage. Flushing can be realized.
- Air isolation  
Patented technology, air separation, preventing sewage from counter current
- Stainless steel cleaning  
Stainless steel sprinklers are more durable. The sprinkler will clean itself and keep it clean before each use,
- Nocturnal light  
Soft blue light, no need to turn on the lights at night, avoid glare and affect sleep. Easy to use, warm and convenient.
- Automatic deodorization  
Adopt advanced anion purification technology to remove odor and purify air.
- Mobile APP cloud service  
Man-machine interaction, free adjustment of water temperature, seat temperature, water pressure; on-line after-sales service. Bluetooth automatic docking, easy activation Intelligent Cloud Services Online after-sales service, a key worry free Infinitely variable speed, free adjustment of water temperature, water pressure and seat temperature.
- Antibacterial heating block  
Intelligent heated seat, seven point heating technology, omni-directional heating, the four-gear temperature adjustable, more intelligent and more humanized.

Compared with traditional solution, we adopted tankless technology which raises the temperature instantaneously at the time of use, while keeping it at off in standby mode.

The ceramic tube is originally designed and manufactured and withstands voltage test of 2500V AC, with a great effectiveness of insulation. Temperature fuse, switch, and sensor work together to ensure the temperature will not exceed 113°F.

Thanks to the precise temperature sensor, and the unique heating channel design, the temperature difference remains within 2 degrees F. Metal-coating prevents ceramic tube from scaling.

Model #: 240006

